



Commodore Homes of Pennsylvania

2020

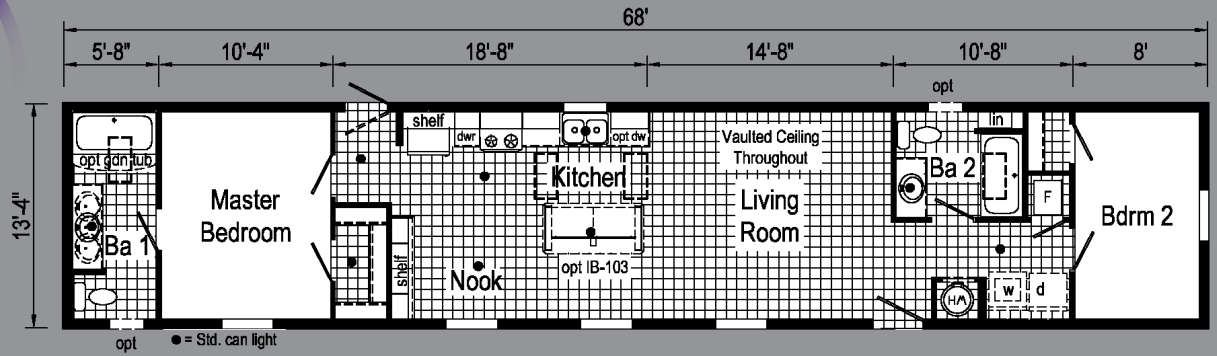


Select

Blazer

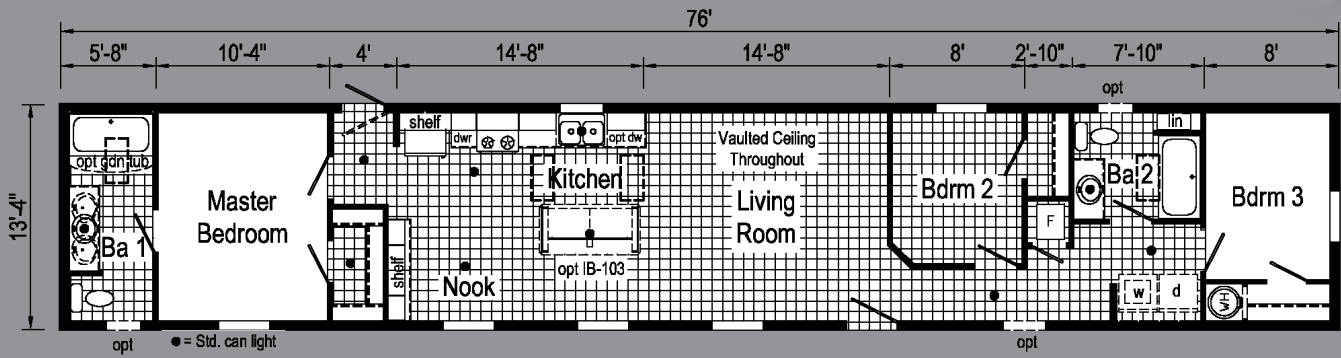
# TS1001P

1468 907 sq. ft.



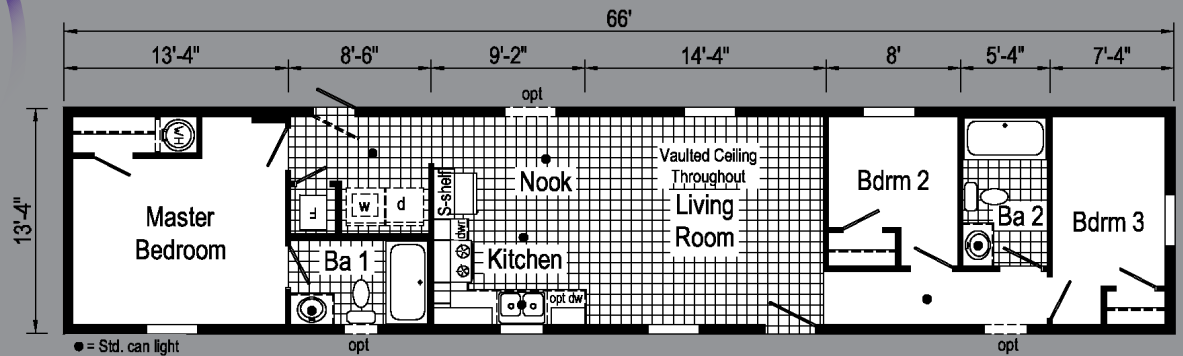
# TS1002P

1476 1013 sq. ft.



# TS1003P

1466 880 sq. ft.



\*Due to continued product improvements, changes in supplies or design; PICTURES may not accurately depict our current product offering.

# TS1001P PHOTOS



\*Please use pictures for floorplan vision only. Decors and materials used are constantly changed and improved.



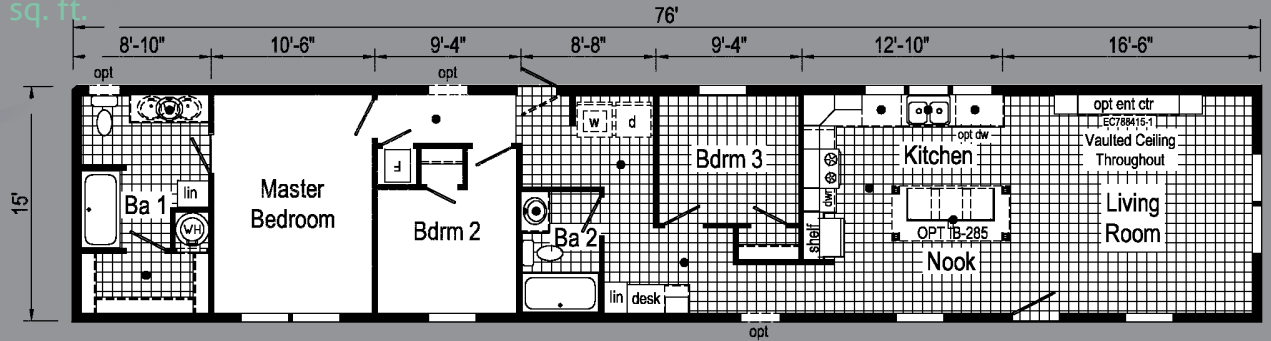
*Scan to  
Watch Video!*



*Blazer Select*

# TS1004V

1676 1140 sq. ft.



\*Please use pictures for floorplan vision only. Decors and materials used are constantly changed and improved.



*Scan to Watch Video!*





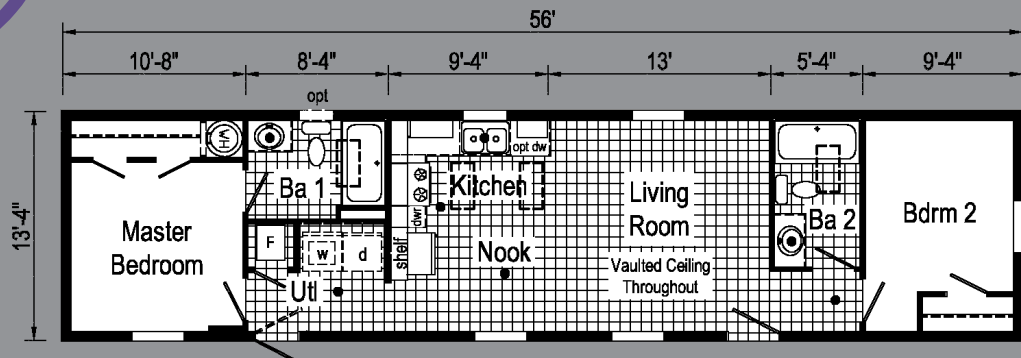
\*Please use pictures for floorplan vision only. Decors and materials used are constantly changed and improved.



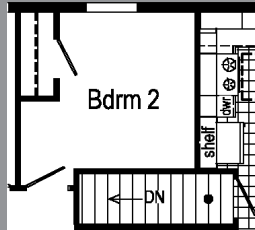
*Scan to Watch Video!*

**TS1005P**

1456 747 sq. ft.



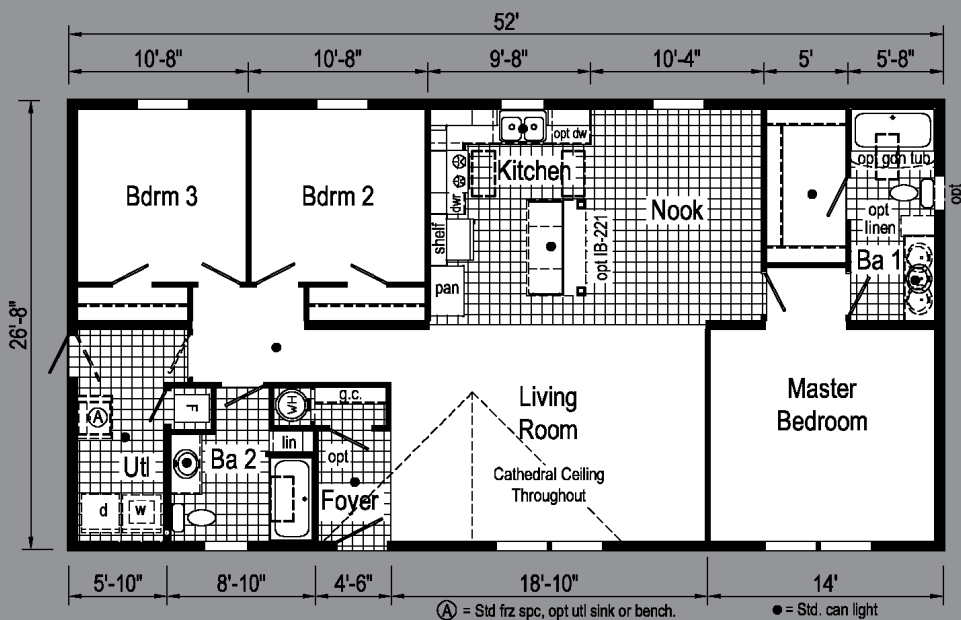
*Blazer Select*



**Optional Stairwell**  
(omits pantry)

**TD1001P**

2852 1387 sq. ft.



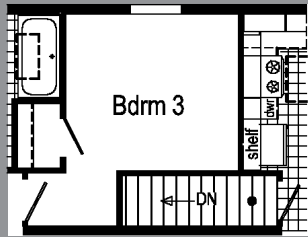
*Scan to Watch Video!*

TD1001P  
PHOTOS



\*Please use pictures for floorplan vision only. Decors and materials used are constantly changed and improved.

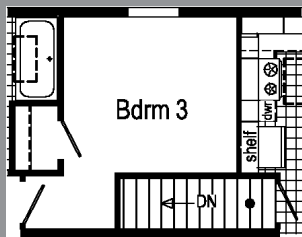
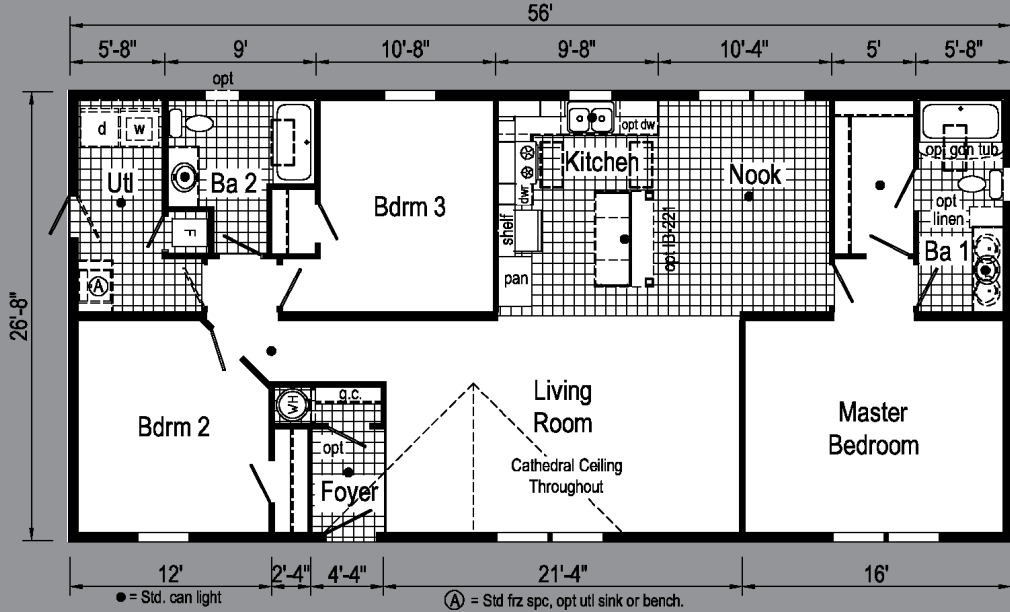




**Optional Stairwell**  
(omits pantry)

**TD1002P**

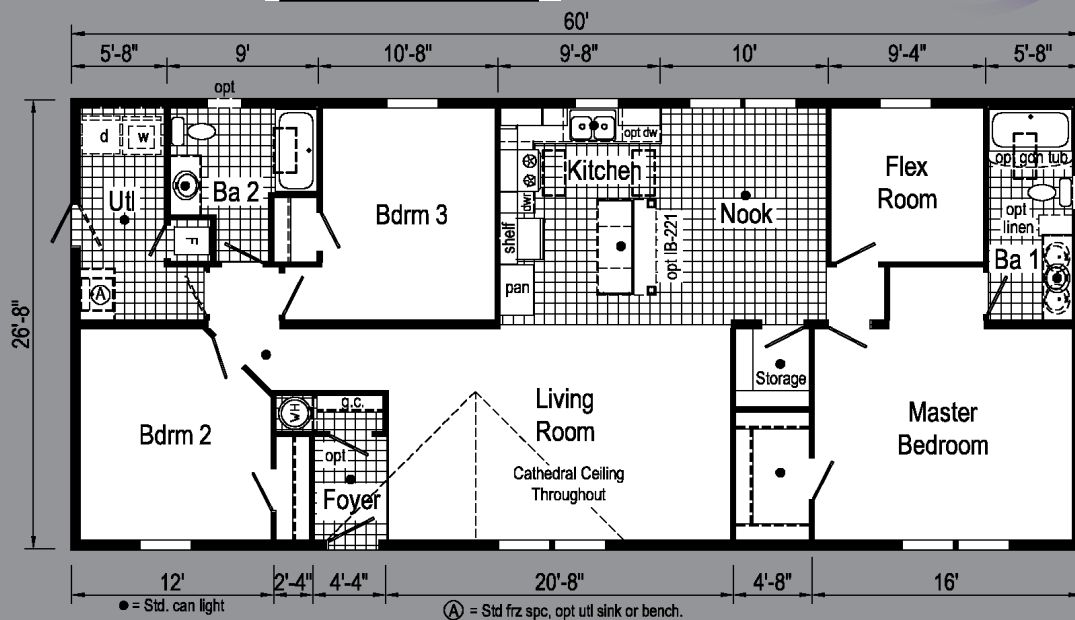
2856 1493 sq. ft.



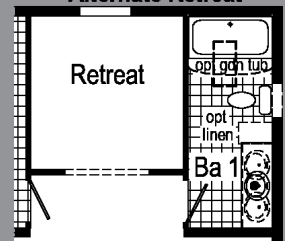
**Optional Stairwell**  
(omits pantry)

**TD1003P**

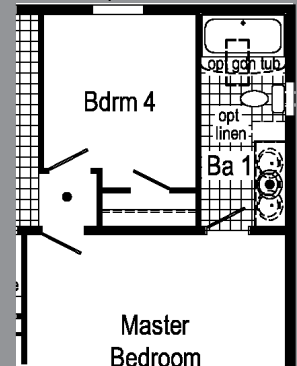
2860 1600 sq. ft.



**Alternate Retreat**

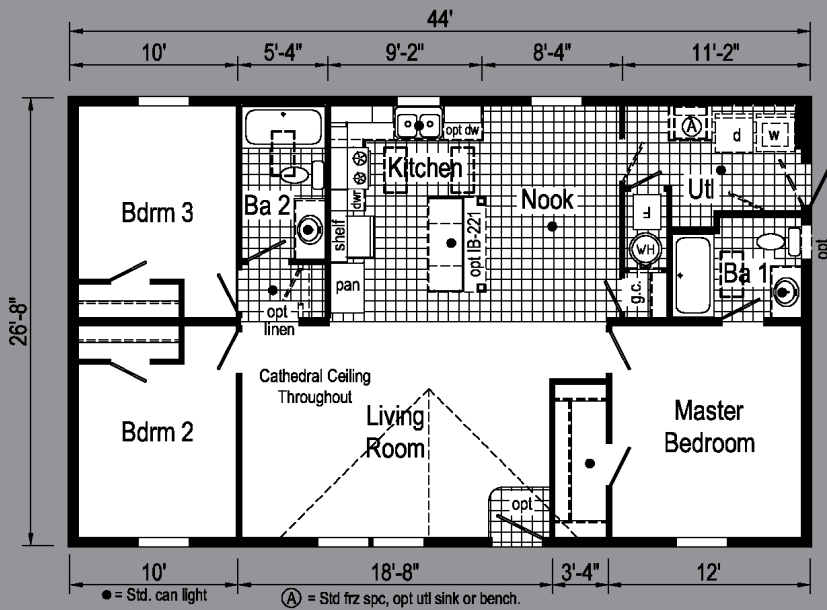


**Optional 4th Bedroom**  
Replaces Flex Room

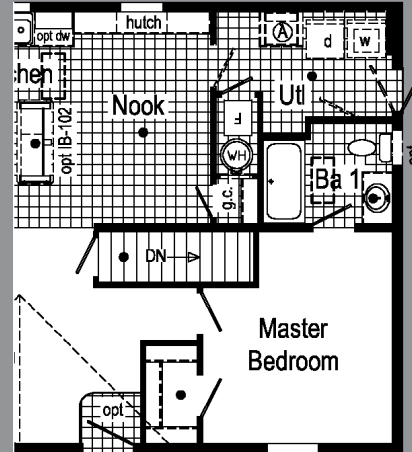


# TD1005P

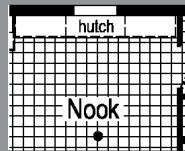
2844 1173 sq. ft.



Optional Hutch



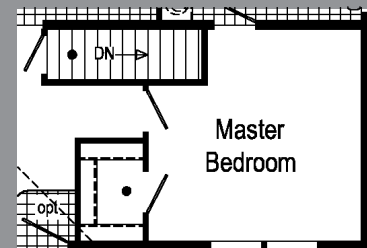
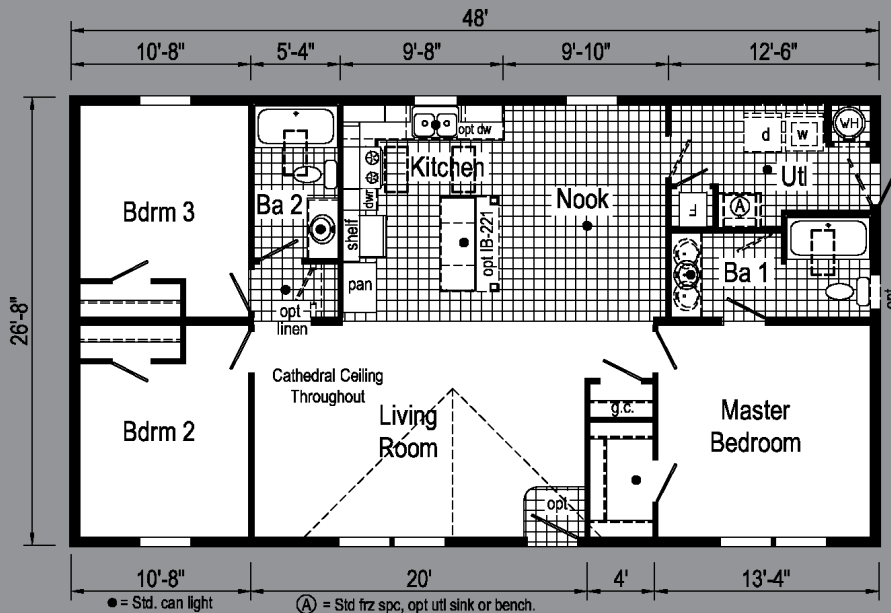
Optional Stairwell  
(changes optional island)



Optional Hutch

# TD1006P

2848 1280 sq. ft.

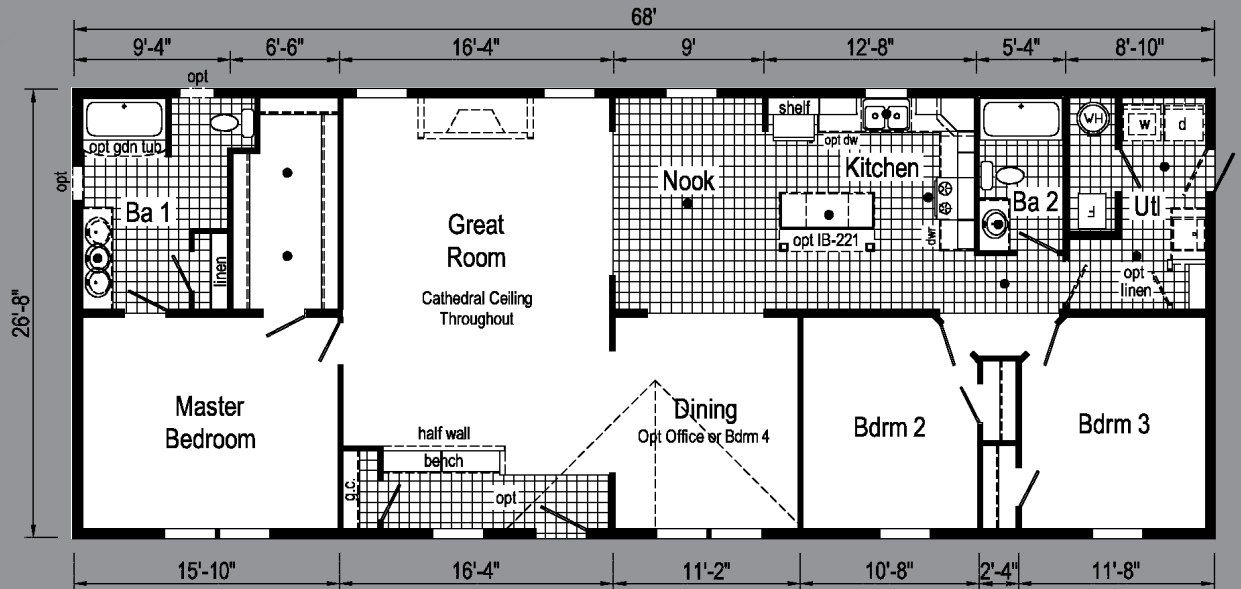


Optional Stairwell  
(omits g.c.)

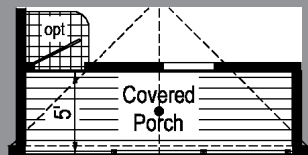


# TD1008P

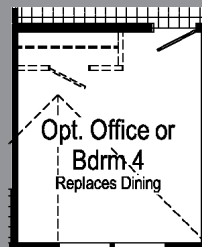
2868 1140 sq. ft.



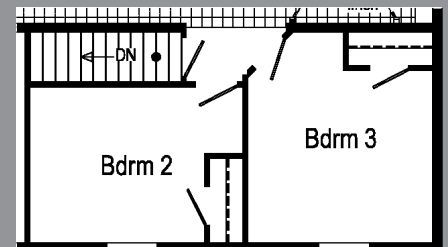
Scan to Watch Video!



Optional Covered Porch

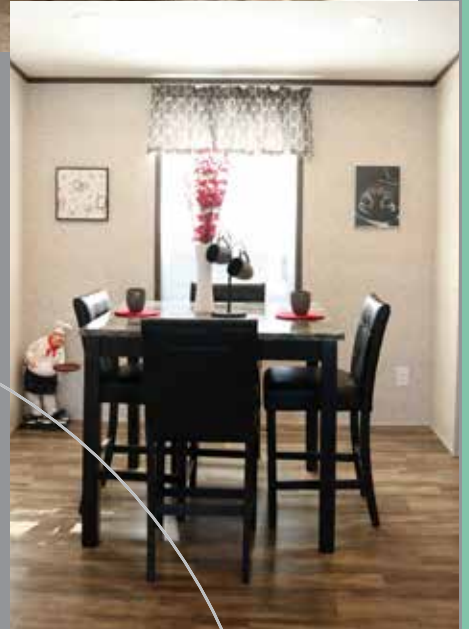


Opt. Office or Bdrm 4  
Replaces Dining



Optional Stairwell

# TD1008P PHOTOS



\*Please use pictures for floorplan vision only. Decors and materials used are constantly changed and improved.



# Select

## Blazer



[www.commodore-pa.com/inhouse-experience](http://www.commodore-pa.com/inhouse-experience)

Connect with Us:



**Commodore Homes of Pennsylvania**

20898 Paint Blvd  
Shippenville, PA 16254  
(814) 226-9210

[www.commodore-pa.com](http://www.commodore-pa.com)  
[clarion@commodorehomes.com](mailto:clarion@commodorehomes.com)

Your Independent Retailer is:

Your purchase contract, including options, is with your retailer who is an independent contractor, not our agent, and who is responsible totally for any alterations, exchanges, additions or attachments made in or to your home.

All descriptive representations of the products on this brochure are believed to be correct at the time of publication. However, due to continued product improvement and changes in suppliers, design and production, accuracy cannot be guaranteed. Therefore, equipment, colors, material specifications, prices and model availability are subject to change without notice. All information and images contained in this brochure are property of The Commodore Corporation and for the use by active dealers of the company only. © AP 5/19